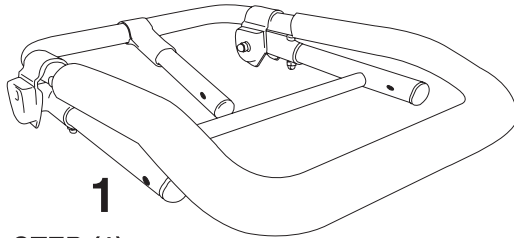


◆ WARNING! ◆

Do not use the "Aqua Step" when boat is turned on or in motion. As serious injury may occur. **Do not** use the step to pull anyone or anything. Serious hull damage may occur. The "Aqua Step" is intended for boarding your boat in the water only. "Aqua Performance" will not be responsible for damage or injury due to improper use or installation of step.

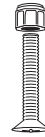
U.S. & Canada Patent #5,152,244 - #5,458,080 - #5,927,433 - #5,970,905 - #6,021,733 - #7,503,276 - # 7,314,019

***READ ALL OF THESE INSTRUCTIONS THOROUGHLY BEFORE BEGINNING THE INSTALLATION OF THE BOARDING STEP. MAKE SURE YOU HAVE ALL PARTS & TOOLS TOGETHER BEFORE BEGINNING!**

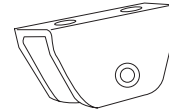


1

- 1: AQUA STEP (1)
- 2: COUNTER SUNK BOLT (3) W/ Lock Nut (3)
(To be used for Mount Brackets)
- 3: MOUNT BRACKET (3)



2

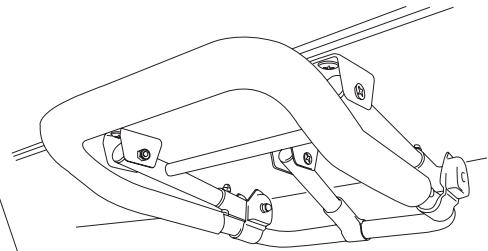
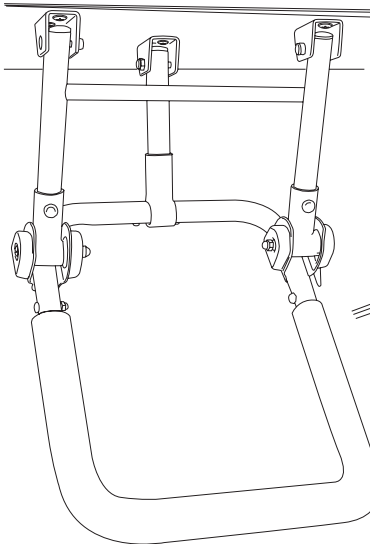


3

INSTALLATION HARDWARE, ONE KIT INCLUDED:
Carriage Bolts w/ Lock Nuts
Phil Pan Machine Screws w/ Lock Nuts
Reinforcement Plate and/or AVK Inserts

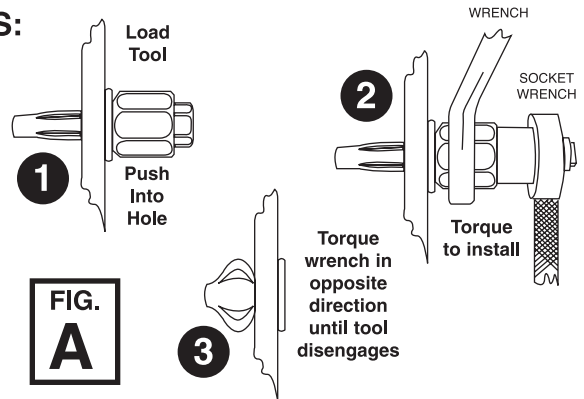
TOOLS NEEDED:

- Electric drill with a 3/16" drill bit
- Pencil or Washable Marker
- Tape Measure
- Phillips Screwdriver
- You'll also need a tube of marine silicone.
- If your kit comes with AVK inserts, you will need a 25/64" drill bit (no substitutions), a wrench and a socket wrench.



IF YOUR INSTALLATION REQUIRES AVK INSERTS:

- 1) Verify that the spots you marked to be drilled are exactly the spots you want to drill. Using a 25/64" drill bit (no substitutions), drill holes.
- 2) Insert all 6 steel AVK inserts into drilled holes. Load tool and push into hole. Using your wrench, hold tool in place to prevent turning.
- 3) Now torque down the hex screw with the socket wrench clockwise. Once finished, remove installation tool by torquing counter clockwise. Do this same operation for all six holes. **SEE FIG. E.**



MAINTENANCE: To ensure the best operation of your aqua step, Aqua Performance recommends that you hose off your step after every use, as you would the rest of your watercraft. To remove sand build up: You will need to remove the side caps and use a hose to spray water inside the spring mechanism while moving the step up and down. When finished rinsing, we recommend and use Prolong Oil as a lubricant onto the spring. Replace caps and bolts to ensure a proper fit.

FOR WARRANTY OR REPLACEMENT PARTS, PLEASE VIST OUR WEBSITE: www.aquaperformance.com

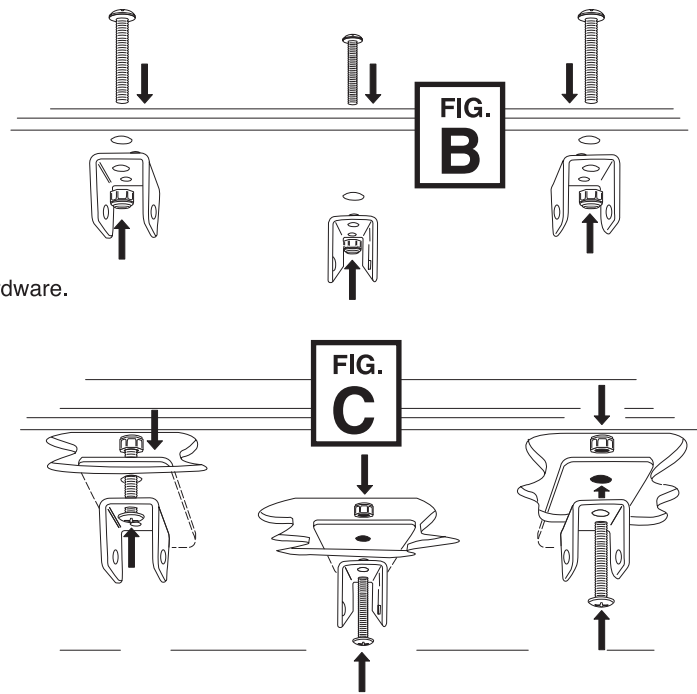
METHOD OF INSTALLATION IF YOUR BOAT HAS . . .

ADD-ON SWIM STEP OR TEAK PLATFORM:

Through bolt from the top of platform.
Drill size needed 3/16"

INTEGRATED SWIM STEP PLATFORM:

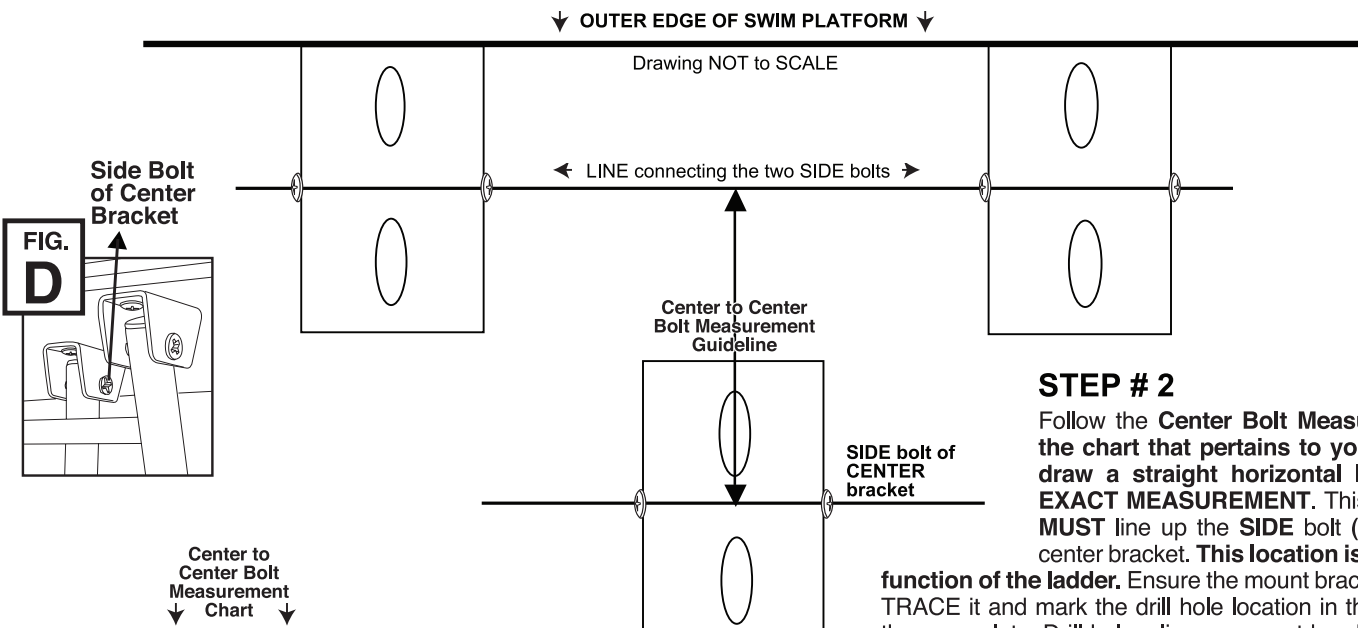
- 1) If your swim step thickness is a solid 1 1/2" in thickness - through bolt from the top of your platform down into the bracket using a 2" carriage bolts w/lock nut. Drill size needed 3/16". **SEE FIG. B.** If platform thickness varies you may need to supply your own hardware.
- 2) If you are able to get between (inside) your platform use the reinforcement plates supplied on the inside and through bolt from the outside going in - using Phil Pan w/nut supplied. **SEE FIG. C.** Drill size needed 3/16".
- 3) If you are unable to get between your platform use AVK inserts. You will need a 25/64 size drill bit for holes. **NO SUBSTITUTIONS** on drill size. Follow special AVK INSTRUCTIONS. **SEE FIG. A ON PREVIOUS PAGE FOR AVK INSTRUCTIONS.**



STEP # 1

All 3 mount brackets must be on the same level plain. Swim platform can not angle more than 30 degrees. If your platform has a recession call for instructions or go to our website @ aquaperformance.com. Insert the 2 front tube extensions inside the mount brackets and insert counter sunk bolt through mount bracket and tube to hold in place. **DO NOT** attach lock nuts yet (this will ease installation). Position the mount brackets **as close to the the edge of the swim platform** making sure it is **squared up**. Position is very important as this will give you the best extension of ladder when boarding. See example below.

Trace the 2 mount brackets giving yourself a guideline where to position. Next remove the bolt and place mount bracket over outline. Mark the holes in center of slot, move bracket and drill hole. Line up mount brackets over holes, add a marine grade silicone to threads of hardware specified for your application and tighten. If you need **AVK** inserts **SEE FIG. A on previous page**. Next, draw a straight line connecting the 2 **SIDE** bolts of the mount brackets. Now draw a straight line going back toward the transom. This will be the center to center bolt measurement guideline.



Aqua Step Part Number	Size	Center Bolt Measurement
1063TL	10 x 18	6"
1063TL	11 x 18	6"
1063TL	14 x 18	6"
1063TL	10 x 21	5 1/2"
1063TL	11 x 21	5 1/2"
1063TL	14 x 21	5 1/2"
1060TL	11 x 34	10 1/4"
NAS-28' MAGIC/CAT	11 x 34	11 3/8"

STEP # 2

Follow the **Center Bolt Measurement** from the chart that pertains to your ladder and draw a **straight horizontal line AT THAT EXACT MEASUREMENT**. This is where you **MUST** line up the **SIDE** bolt (**FIG. D**) of the center bracket. **This location is critical to the function of the ladder.** Ensure the mount bracket be straight, **TRACE** it and mark the drill hole location in the **CENTER** of the open slots. Drill holes, line up mount bracket over holes, add a marine grade silicone to threads of hardware and tighten. Attach tube extensions to mount brackets and insert counter sunk bolts from the outside of mount brackets and tighten with lock nuts. If marine silicone was needed follow manufacture instruction cure time before use.

To use: Pull Aqua Step toward you, kneel with one leg if possible, lean forward and lift other foot onto Aqua Step. Push up with foot and raise knee onto swim platform, follow with other foot. Aqua Step will **SELF** retract!